



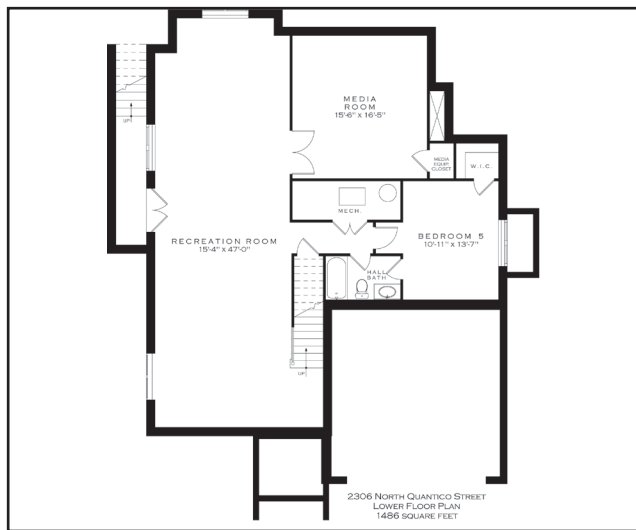
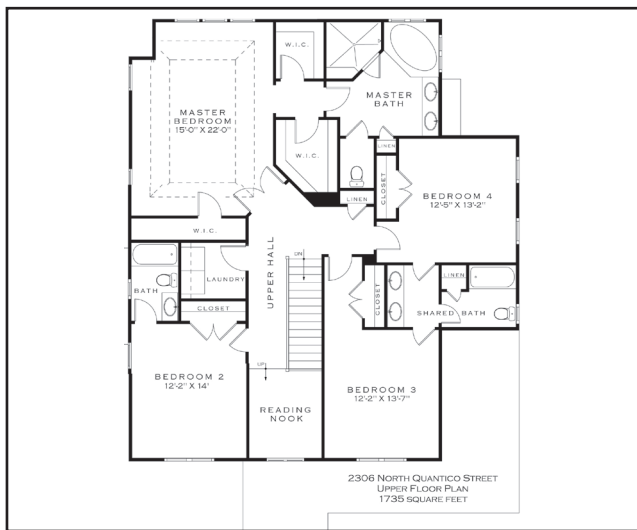
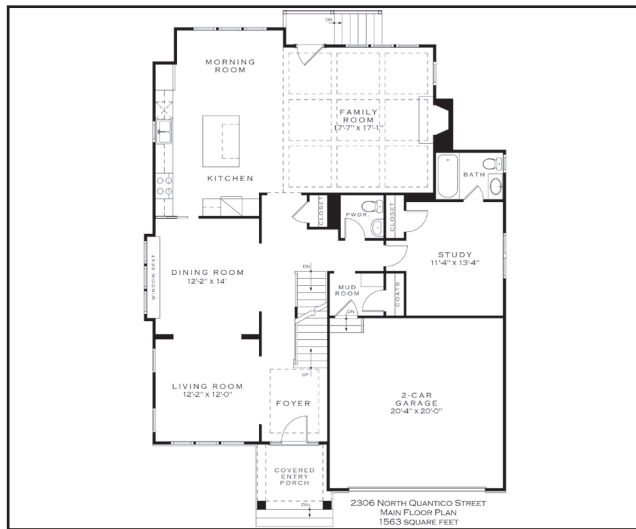
LOCATION \* DESIGN  
\* CRAFTSMANSHIP \*

John Plank Real Estate Services, Inc.

Long & Foster Real Estate

[www.johnsellsarlington.com](http://www.johnsellsarlington.com)

## 1522 Nicholas St.



Provided for illustrative purposes only. Price, specifications, and plans subject to change without notice.



[www.johnsellsarlington.com](http://www.johnsellsarlington.com)